



# INDOFINE Chemical Company, Inc.

121 Stryker Lane, Bldg. 30, Suite 1 • Hillsborough, NJ 08844 • U.S.A.

Phone: (908) 359-6778 • FAX: (908) 359-1179

website: [www.indofinechemical.com](http://www.indofinechemical.com)

e-mail: [chemical@indofinechemical.com](mailto:chemical@indofinechemical.com)

## CERTIFICATE OF ANALYSIS

Catalog Number: 06-595

Product Name: GALLOCATECHIN GALLATE

Cas Number: [4233-96-9]

Lot Number: 2211730

Chemical Formula: C<sub>22</sub>H<sub>18</sub>O<sub>11</sub>

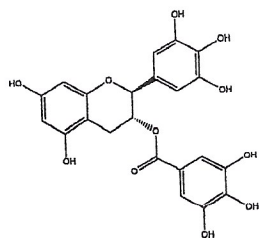
Molecular Weight: 458.37

Appearance: Off-white powder

Water Content: 2.0%

Storage: Store in a cool, dry place. Protect from light.

Purity (HPLC): 98.9%



Prepared by:

*Ramesh Mandadi*

Ramesh Mandadi

Director of Operations

Reviewed and Approved by:

*Sujata Moton*

Sujata Moton

VP



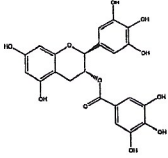
# INDOFINE Chemical Company, Inc.

121 Stryker Lane, Bldg. 30, Suite 1 • Hillsborough, NJ 08844 • U.S.A.

Phone: (908) 359-6778 • FAX: (908) 359-1179

website: [www.indofinechemical.com](http://www.indofinechemical.com)

e-mail: [chemical@indofinechemical.com](mailto:chemical@indofinechemical.com)



## HPLC ANALYSIS

Catalog No.: 06-595

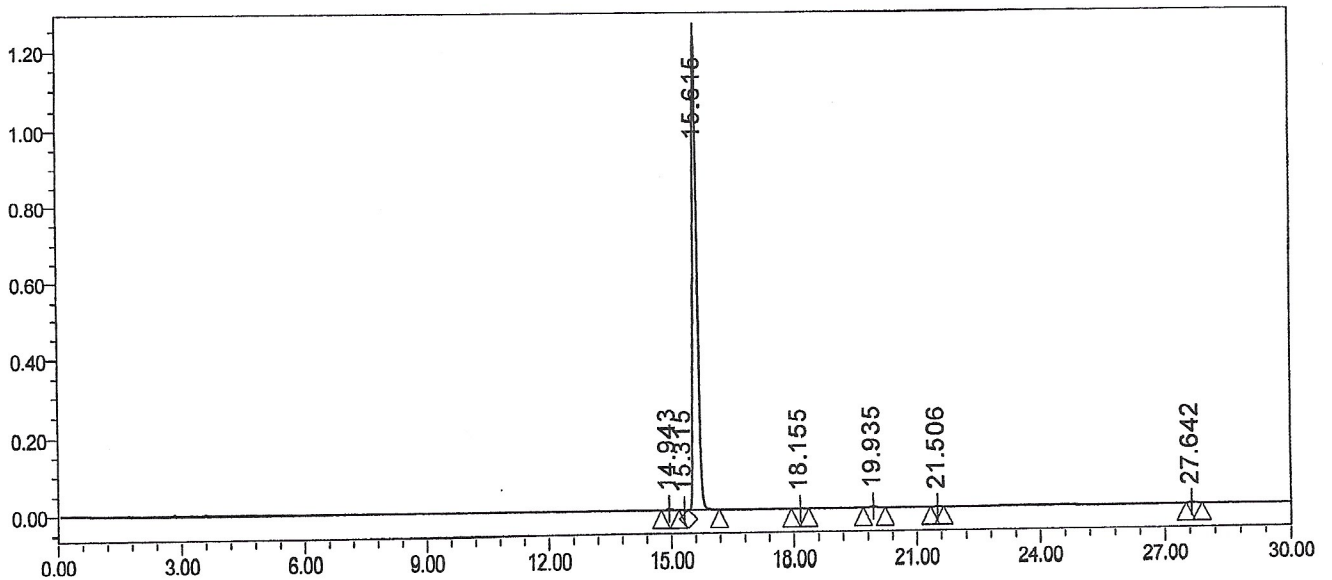
Product Name: Gallocatechin gallate

Lot No.: 2211730

### SAMPLE INFORMATION

Sample Name:	Gallic catechin gallate	Acquired By:	
Sample Type:		Sample Set Name	
Vial:	65	Acq. Method Set:	Gallic catechin gallate
Injection #:	1		
Injection Volume:	10.00 ul		
Run Time:	30.0 Minutes		

Auto-Scaled Chromatogram



Peak Results

	RT	Area	% Area	Height	Plate Count	Resolution
1	14.943	32838	0.36	4661	107501.46	
2	15.315	5918	0.06	903	124612.15	1.97
3	15.615	9094750	98.95	1229969	105033.23	1.56
4	18.155	6700	0.07	766	79353.91	11.95
5	19.935	34554	0.38	4296	177920.69	8.33
6	21.506	4958	0.05	637	170437.39	5.88
7	27.642	11440	0.12	1377	276615.01	22.50